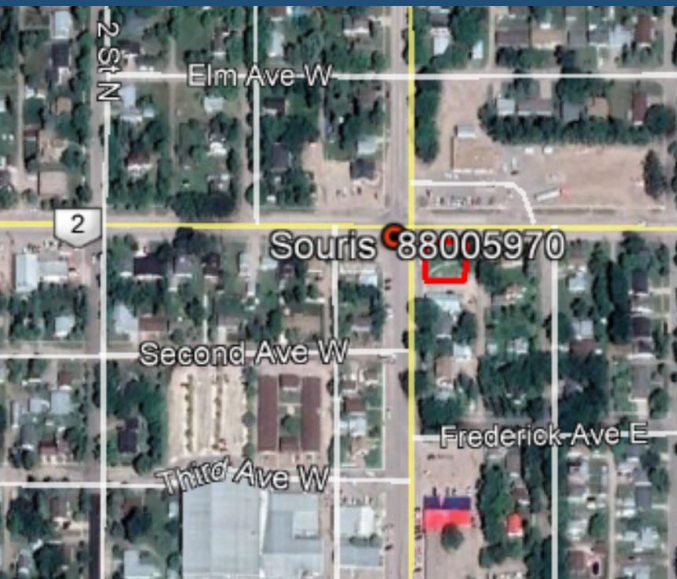


Hwy #2 and First Street South, Souris, MB Price: Offers Invited



Property Details

Available acres: 0.19

2020 Tax Assessed Value: \$51,000

Zoning: Commercial

2020 Taxes: \$1,490.52

Legal Description: LOTS 3-5 BLK 1 SS PLAN 21024 N 1/2 34-7-21 WPM

Former service station and bulk plant located at the corner of Highway 2 and First Street South.

The Town of Souris is located approximately 30 km southwest of Brandon, MB.

Current zoning is Commercial/Highway which permits commercial future uses.

The site occupies approximately 0.19 acres. Surrounding land uses include commercial and residential.

For further information or for a copy of our standard Expression of Interest Form please contact:

propertyinquiries@exxonmobil.com