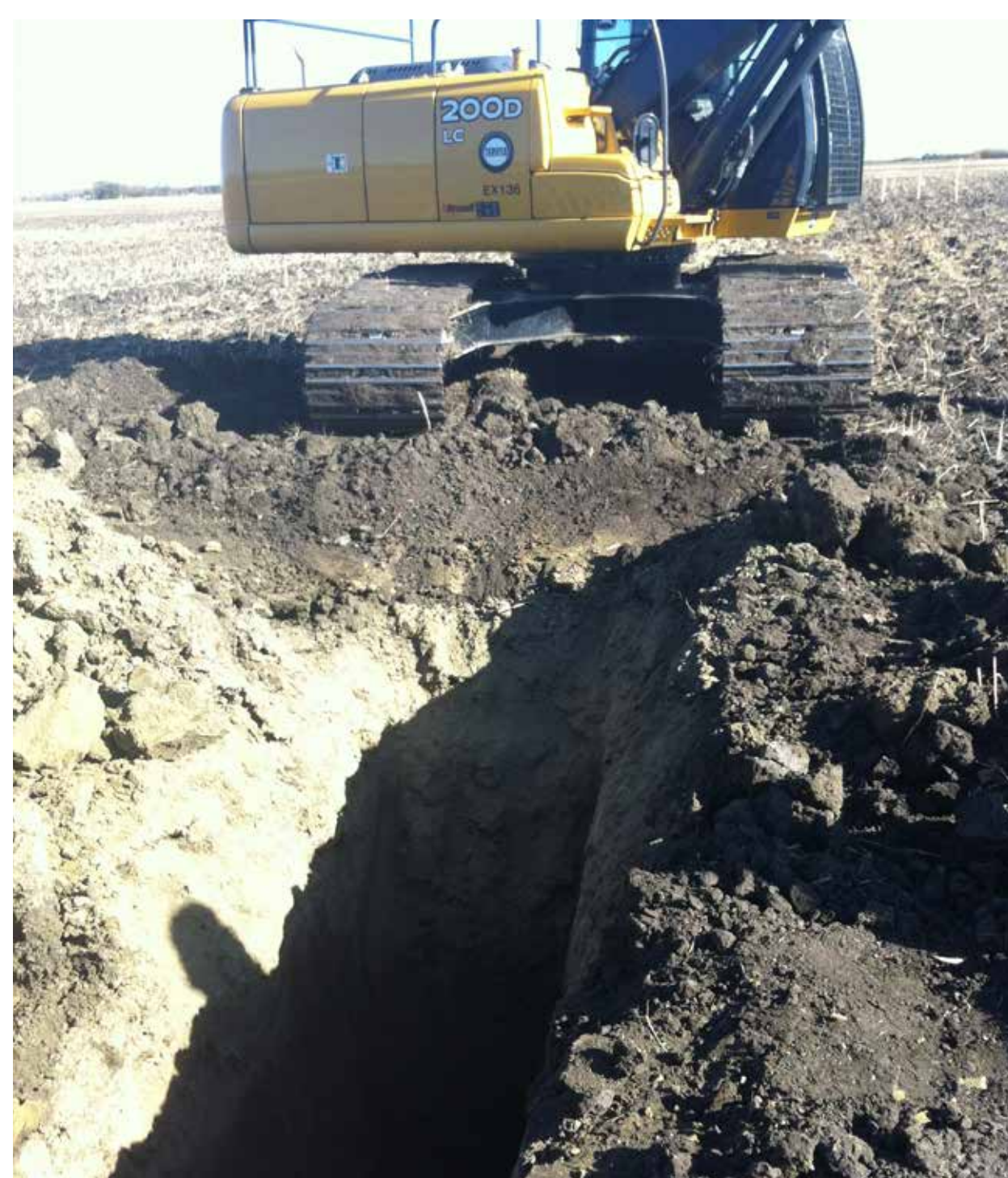


Nanakacihitawin



Mwehci Niswaw ewispayik I ESA

Kikwaya ohci oma atoskewin kawi ispayik 1 ESA ewi mawaskakonamihk ewi nitawacihitacik peci naway kayas acimowina mina kapimohtehk askiy Mimiw Sakahikanihk



Mwehci Niswaw ewispayik II ESA

Ekota ekwa ka nitonaw kotaka mamtonehcikana kamamtonetamihkoyak, Asiskik nitonamok ekwa nipi otinamok natok kikwiya ka kesi apacitacik koci miskakik kikwaya

Translators: Sheila Potts and Ida Bull

WFO2028y 15 08

