

VIA Email

June 25, 2020
Christine Long
Board Secretary and Registrar
Ontario Energy Board
27th Floor, 2300 Yonge Street
Toronto, Ontario M4P 1E4

**Re: EB-2019-0007 - Imperial Oil Waterdown to Finch Pipeline Replacement (the "Project")
Notification of Updates to Project Routing**

Dear Ms. Long:

Further to the Conditions of Approval enclosed as Schedule B to the Ontario Energy Board's (the "OEB" or the "Board") Leave to Construct Decision and Order dated March 12, 2020, Imperial Oil Limited ("Imperial") wishes to advise the OEB of certain proposed changes to the Project's route.

The following changes to the Project routing have been made as a result of further consultation and design optimization. A description of these updates is provided below and realignments are shown on the enclosed figures.

Change Request 1: Highway 403/Hurontario Crossing Realignment

- **Description and Rationale for Change:** The Ministry of Transportation ("MTO") identified setback requirements at this crossing location. To address MTO's requirements with this crossing, the alignment of the pipeline was shifted approximately 65 meters to the northwest, closer to the existing Imperial pipeline.
- **Construction and Restoration Practices:** No impact to construction and restoration practices.
- **Environmental:** Tributaries to Cooksville Creek (WC_37.1, WC_38.1, WC_39.1) will continue to be crossed using a horizontal direction drill ("HDD") construction method. No additional impacts to the environment anticipated as a result of this change.
- **Consultation:** Imperial has provided notification of the realignment to directly affected stakeholders.
- **Lands:** Imperial is working with the directly affected landowners on this realignment.
- **Schedule:** No impact to construction schedule is anticipated as a result of this change.
- **Attachment:** Figure 1

Change Request 2: Highway 401/Highway 27 Crossing Realignment

- **Description and Rationale for Change:** MTO requested a realignment of the pipeline outside of MTO right of way to allow for future expansions of Highway 401. To address MTO's requirements, the pipeline was rerouted outside of the right-of-way. The proposed pipeline will cross Highway 27 approximately 800 meters north of its current location.
- **Construction and Restoration Practices:** No impact to construction and restoration practices.
- **Environmental:** Mimico Creek (WC_45.1) will continue to be crossed using an HDD. An arborist survey was completed along the realignment footprint. No additional impacts to the environment are anticipated as a result of this change.
- **Consultation:** Imperial has provided notification of the realignment to directly affected stakeholders.
- **Lands:** Imperial is working with the directly affected landowners on this realignment.

- **Schedule:** No impact to construction schedule is anticipated as a result of this change.
- **Attachment:** Figure 2

Change Request 3: New Easement Requirement

- **Description and Rationale for Change:** One sliver of PIN 24930-1397 does not fall within the MTO Transit way designation for Highway 407 (fence to fence) and will require an easement from the Ministry of Government and Consumer Services. This PIN was not previously included in the Category B Class EA and will be added.
- **Construction and Restoration Practices:** No impact to construction and restoration practices.
- **Environmental:** No impacts to the environment are anticipated as a result of this change.
- **Consultation:** Imperial has provided notification of the realignment to directly affected stakeholders.
- **Lands:** Imperial is working with the directly affected landowners on this realignment.
- **Schedule:** No impact to construction schedule is anticipated as a result of this change.
- **Attachment:** Figure 3

Please accept this letter as a formal notification of route realignments for Imperial's Waterdown to Finch Project. Please do not hesitate to contact the undersigned if you have any questions.

Sincerely,



Jessie Malone
Environmental and Regulatory Lead
587.476.4799
jessie.m.malone@esso.ca

Attachments: Figure 1: Highway 403 Realignment
Figure 2: Highway 401 Realignment
Figure 3: PIN 24930-1397

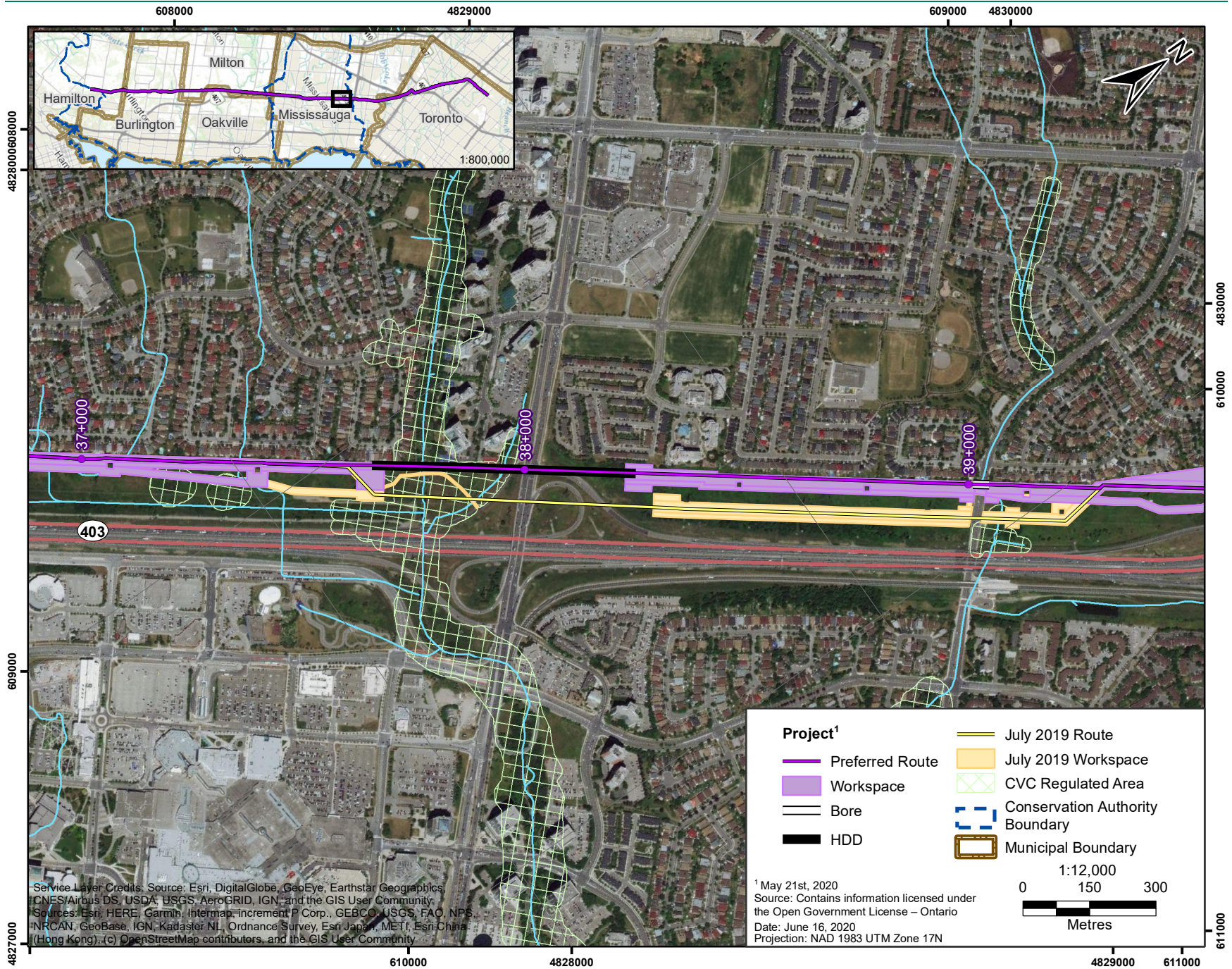


Figure 1: Highway 403 Realignment

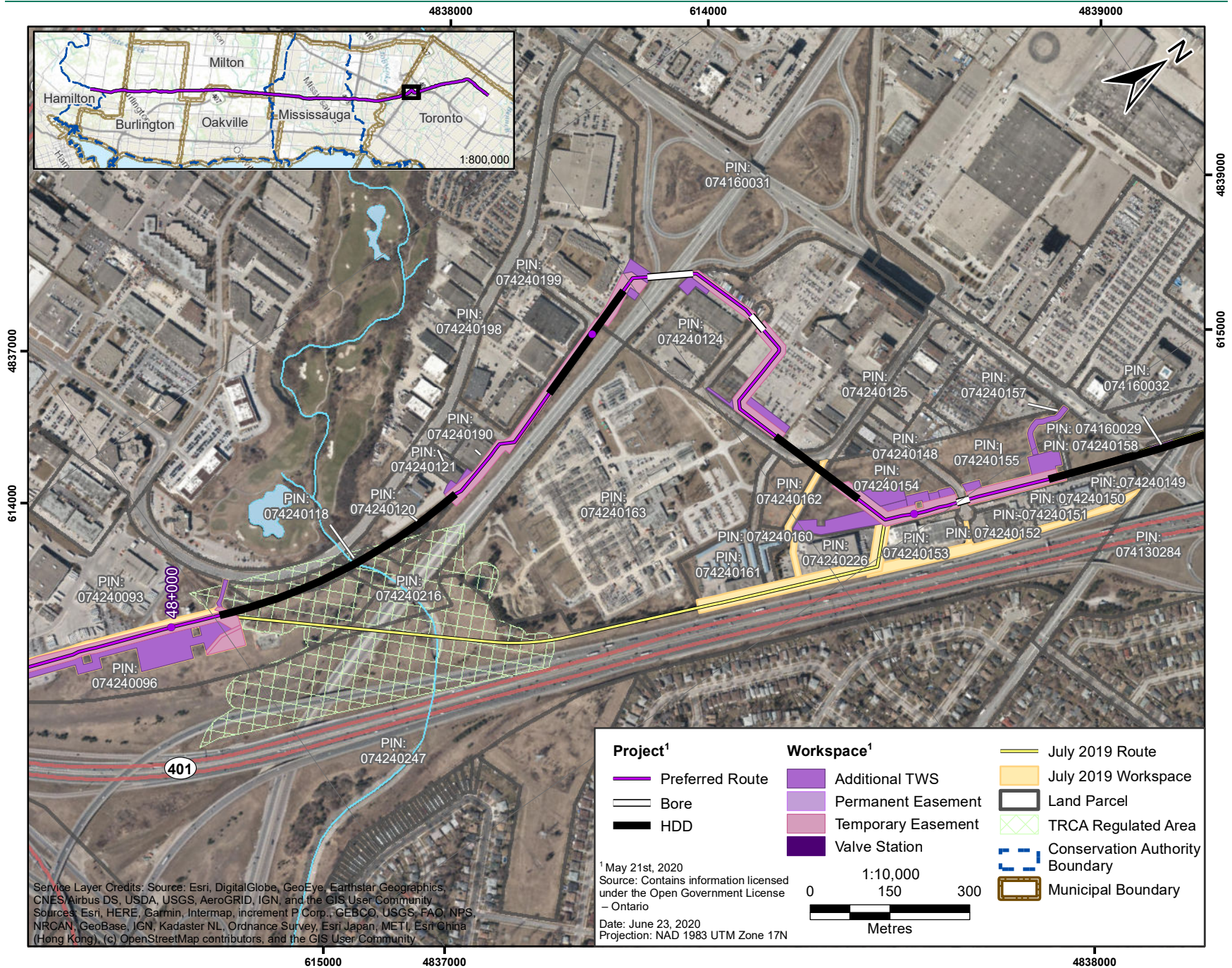


Figure 2: Highway 401/Highway 27 Crossing Realignment

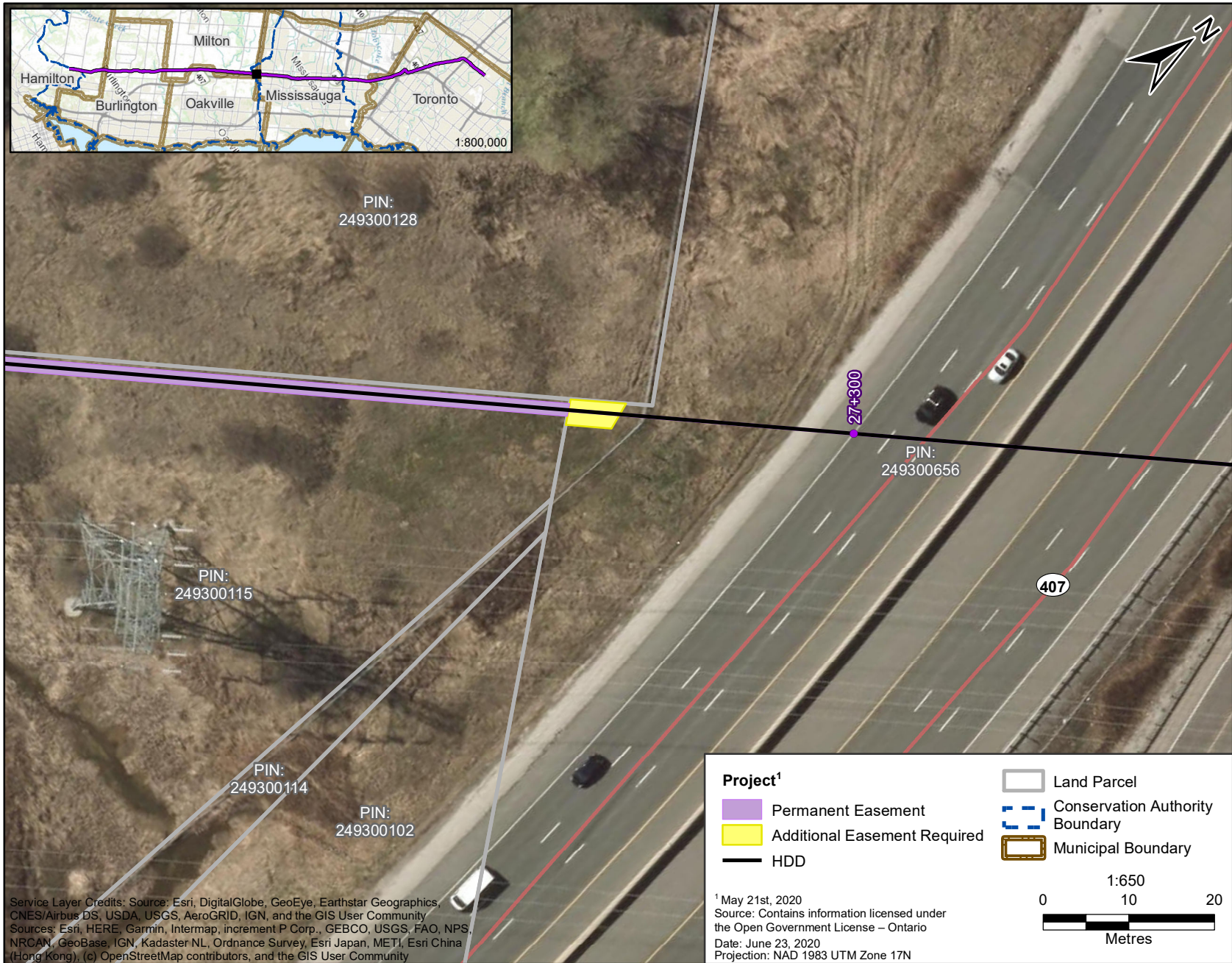


Figure 3: New Easement Requirement