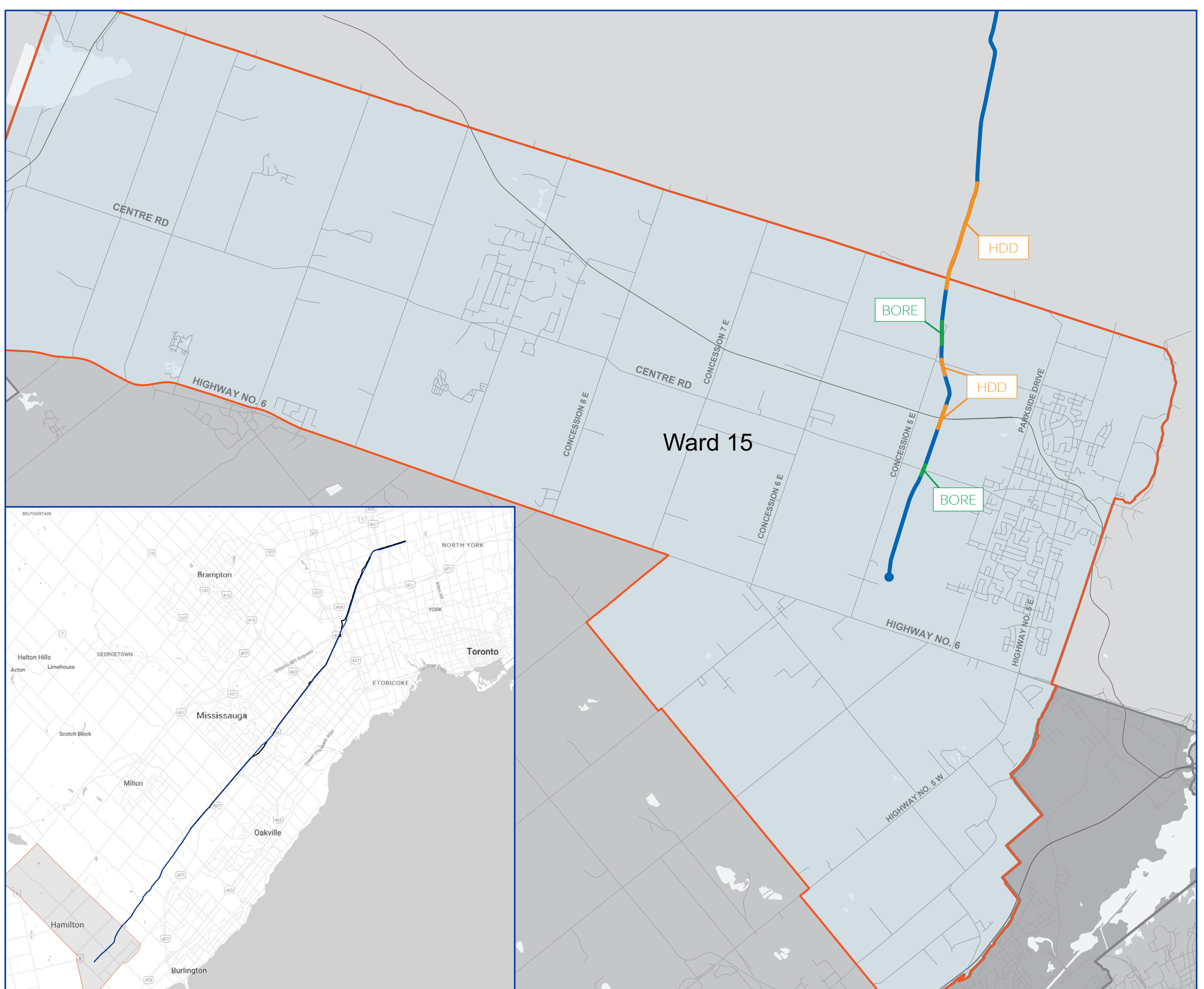


Imperial's Waterdown to Finch Project location

City of Hamilton

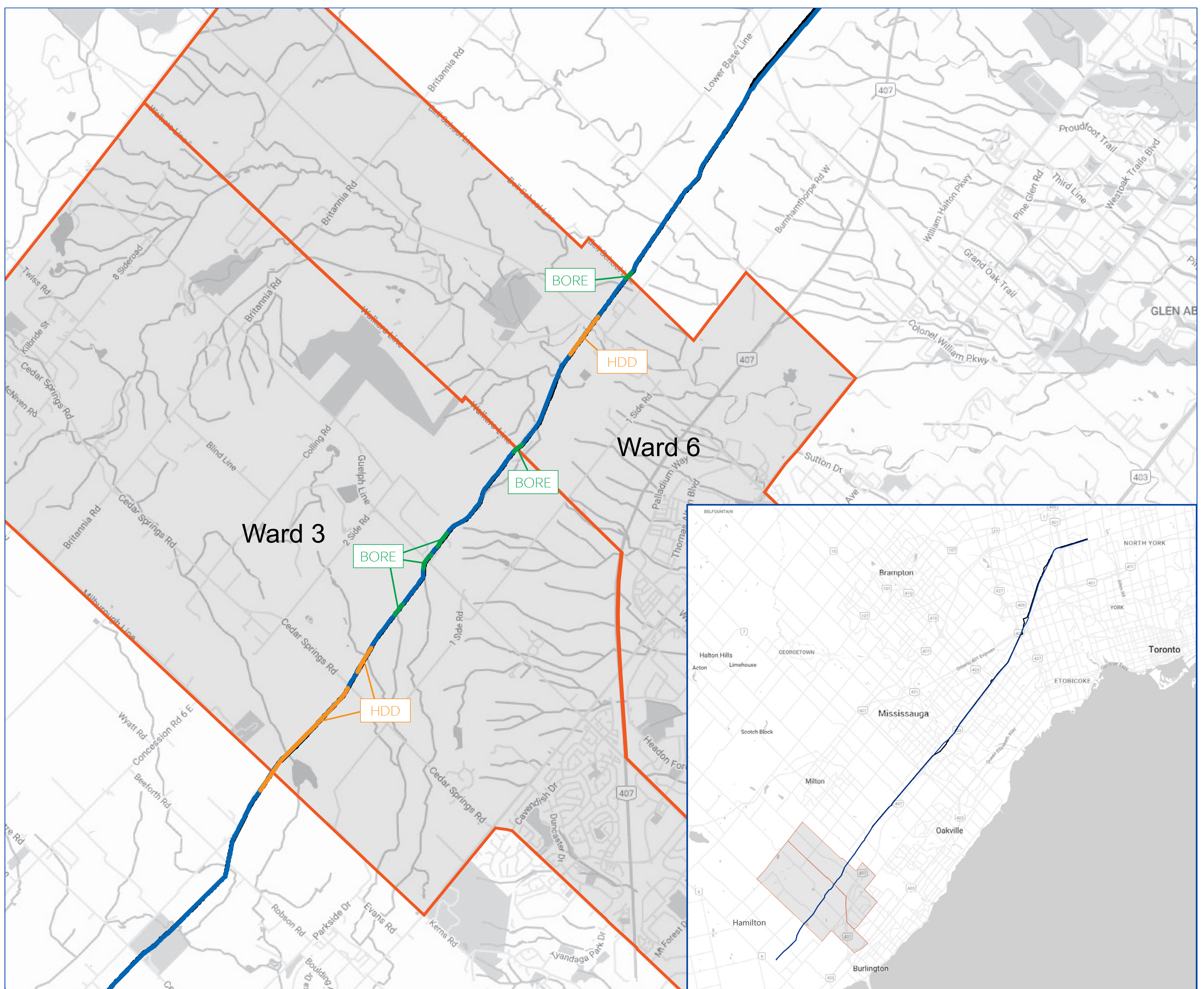


— Imperial's Proposed Pipeline

*Please note: in this area the new line will be in close vicinity to the existing pipeline route.

Imperial's Waterdown to Finch Project location

City of Burlington

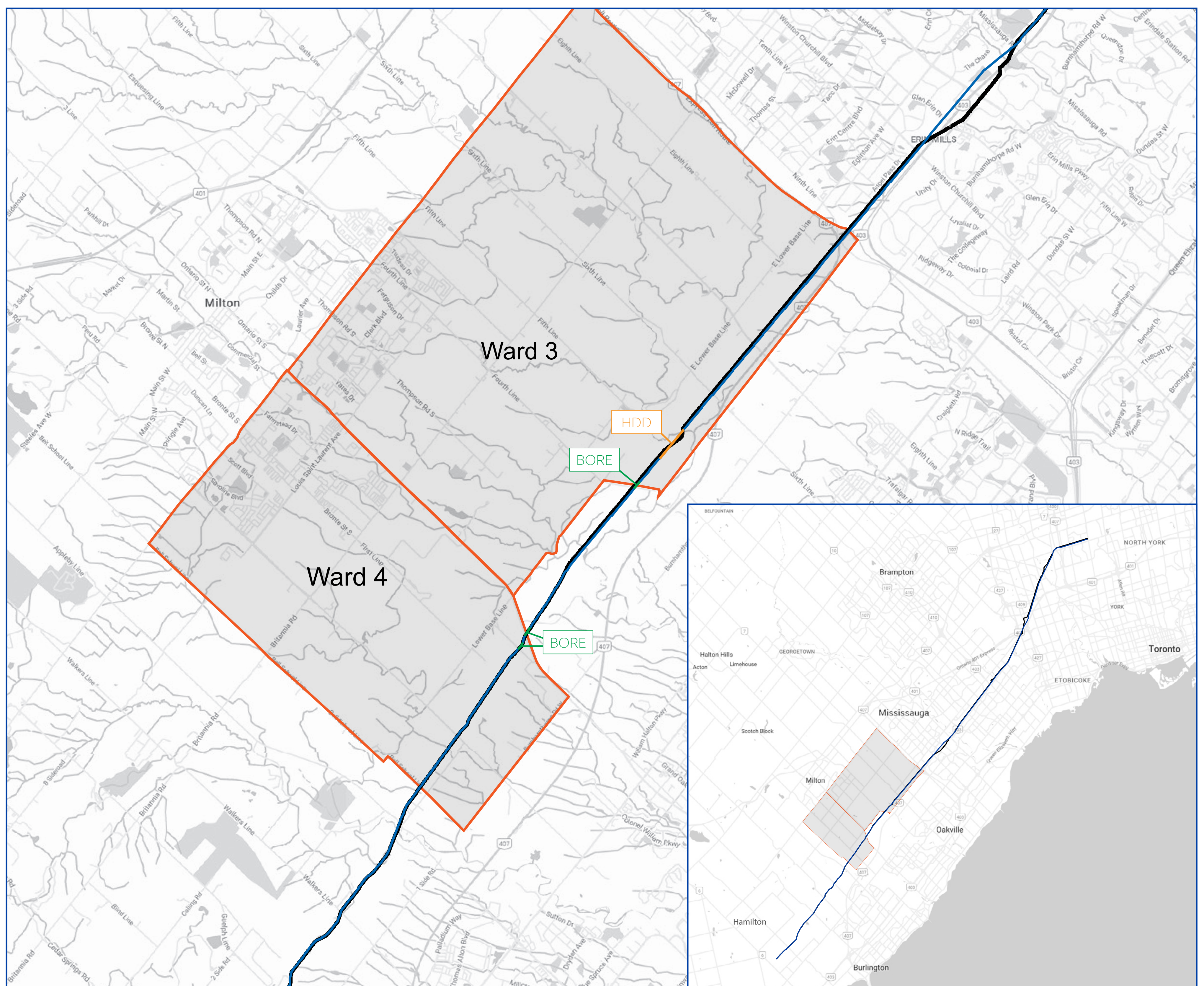


— Imperial's Proposed Pipeline — Imperial's Existing Pipeline

*Please note: in this area the new line will be in close vicinity to the existing pipeline route.

Imperial's Waterdown to Finch Project location

Town of Milton

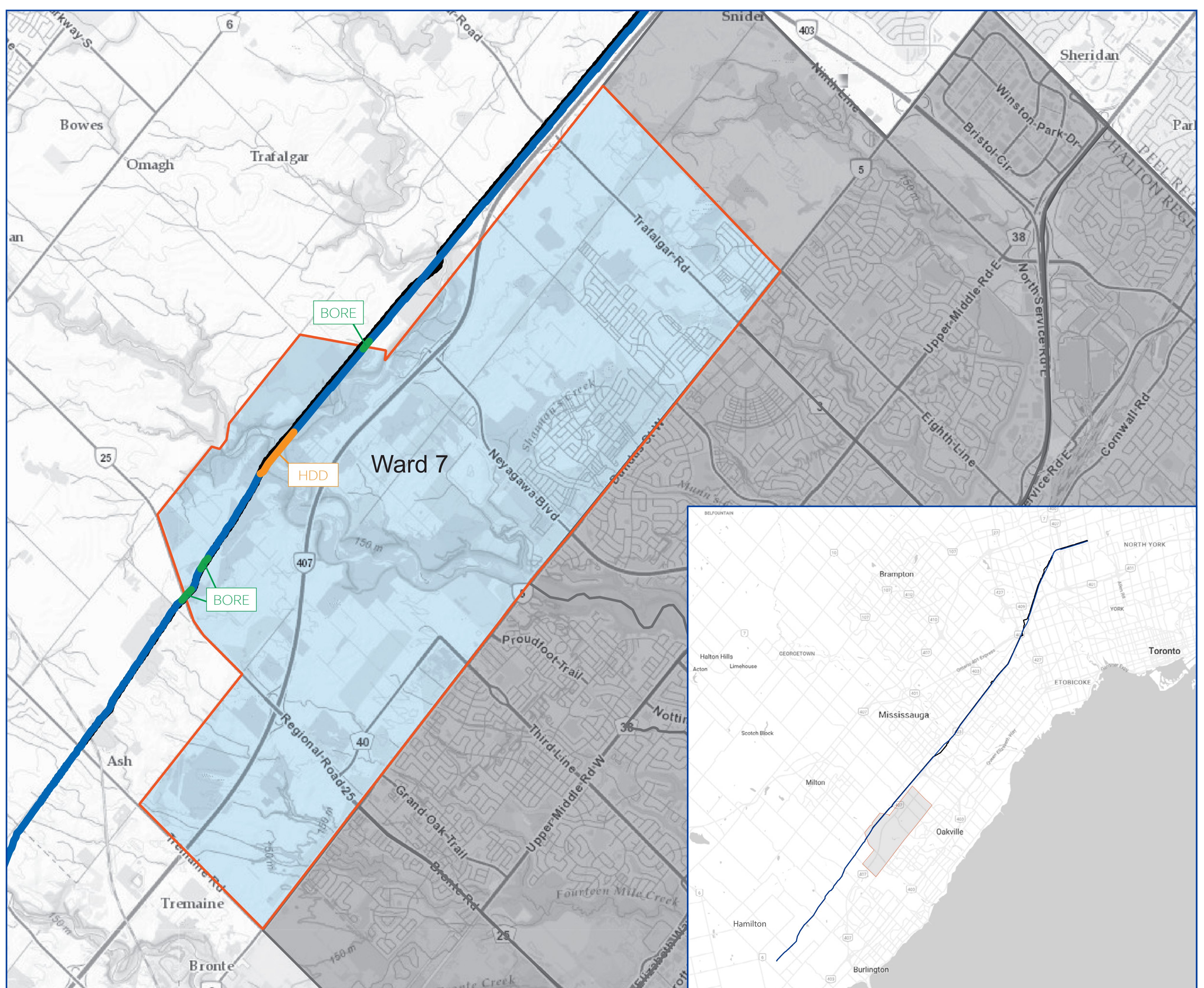


— Imperial's Proposed Pipeline
 — Imperial's Existing Pipeline

*Please note: in this area the new line will be in close vicinity to the existing pipeline route.

Imperial's Waterdown to Finch Project location

Town of Oakville

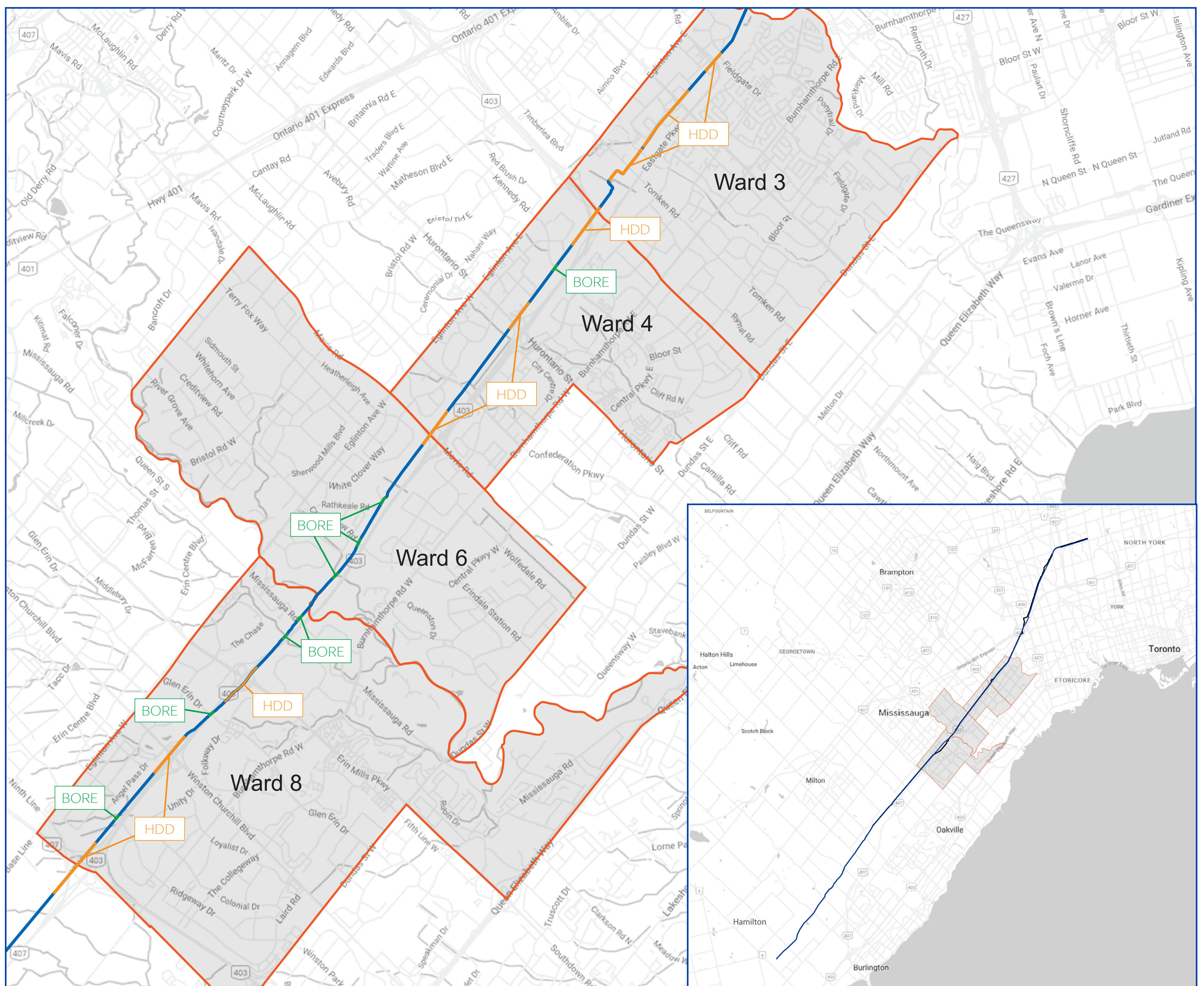


— Imperial's Proposed Pipeline — Imperial's Existing Pipeline

*Please note: in this area the new line will be in close vicinity to the existing pipeline route.

Imperial's Waterdown to Finch Project location

City of Mississauga

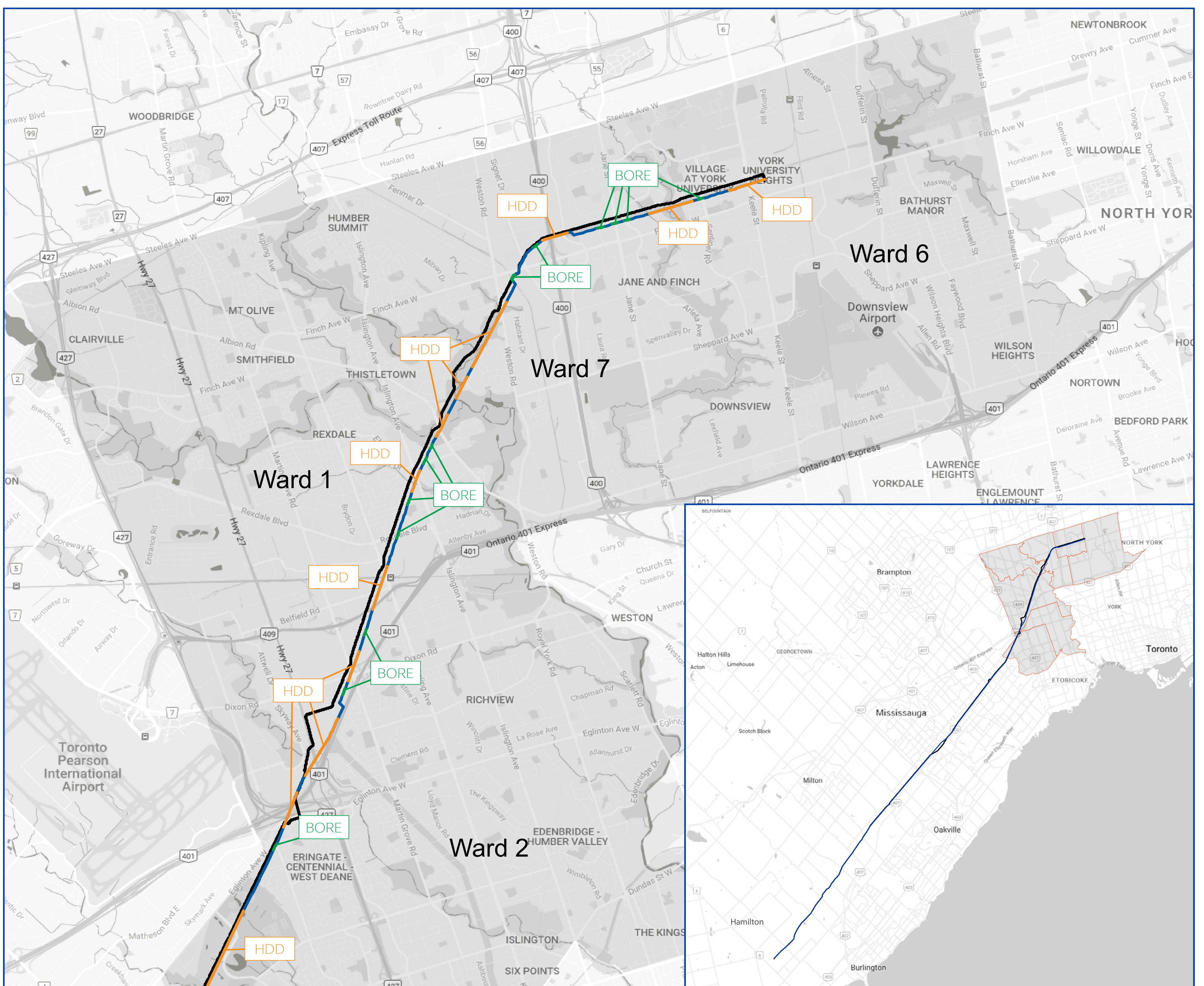


— Imperial's Proposed Pipeline — Imperial's Existing Pipeline

*Please note: in this area the new line will be in close vicinity to the existing pipeline route.

Imperial's Waterdown to Finch Project location

City of Toronto



— Imperial's Proposed Pipeline — Imperial's Existing Pipeline