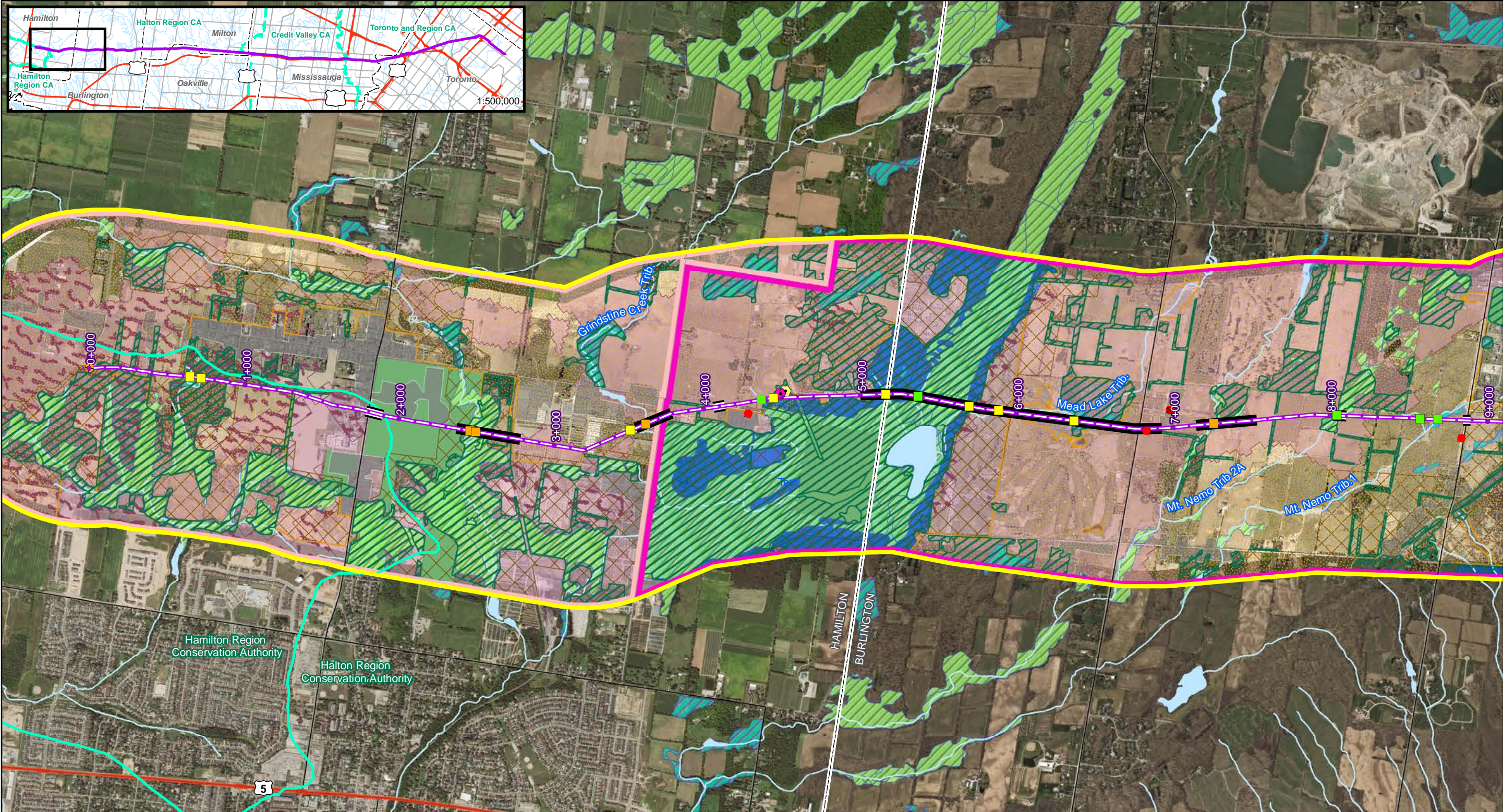
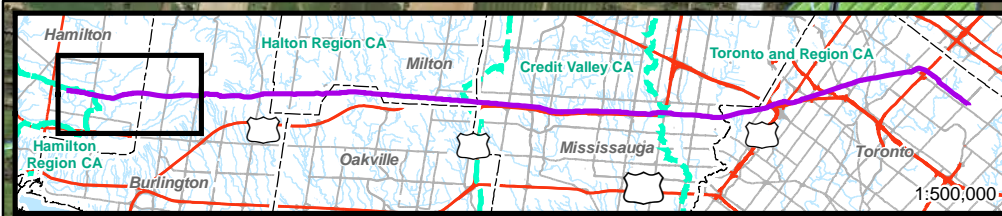


## APPENDIX D ENVIRONMENTAL FEATURES MAP



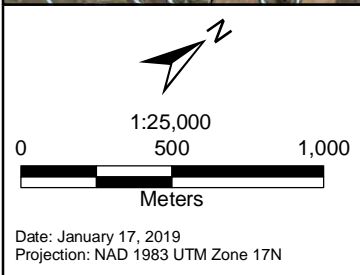
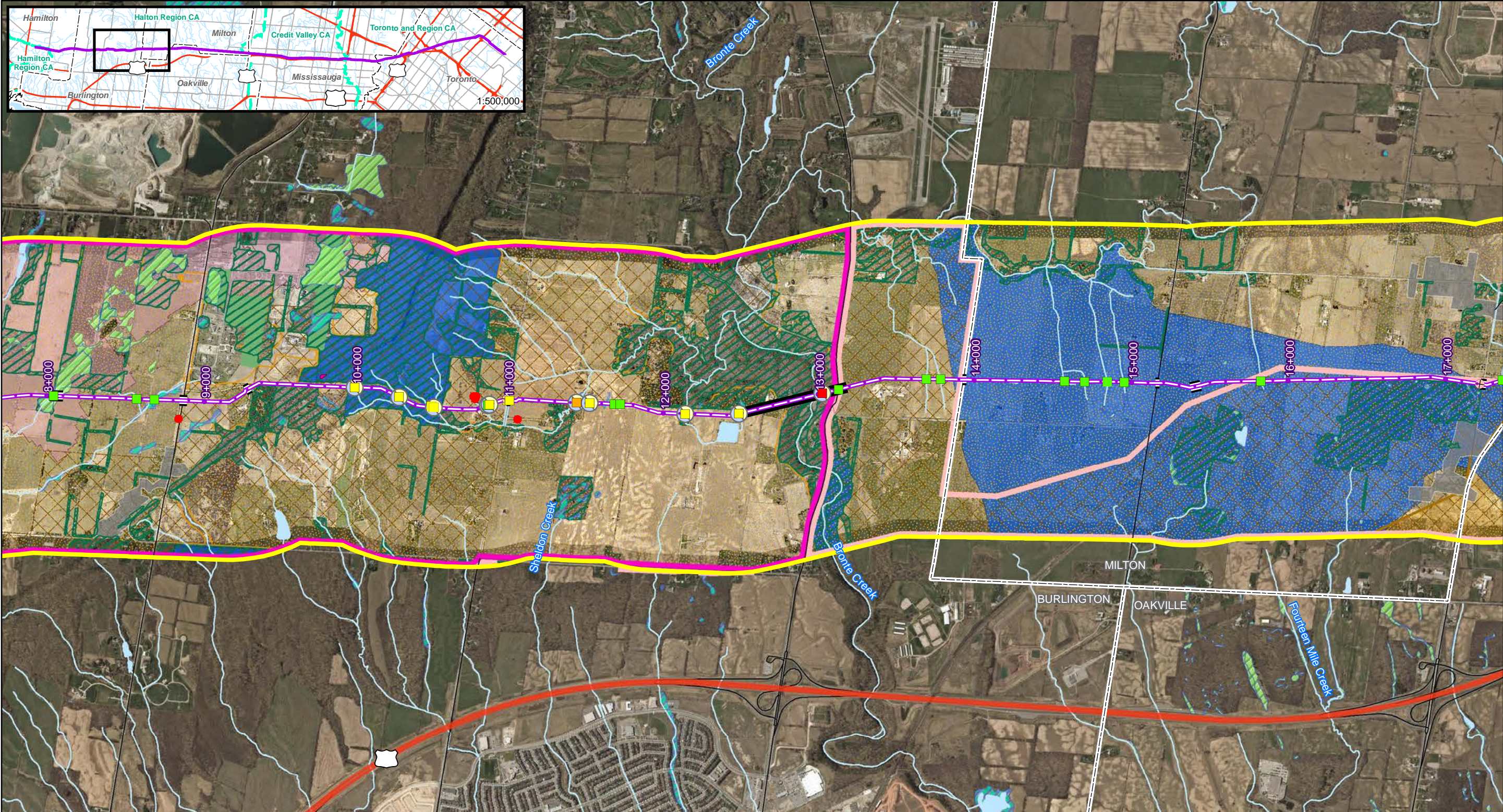
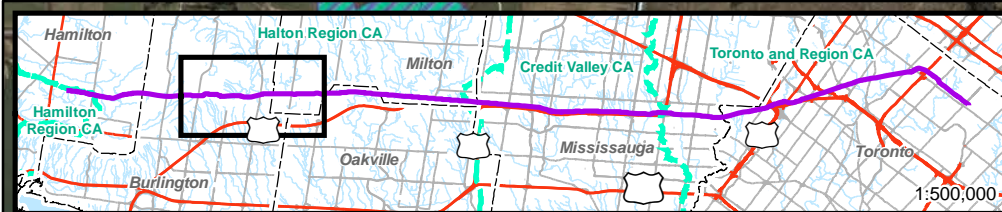
<p>Date: January 17, 2019 Projection: NAD 1983 UTM Zone 17N</p>	<p><b>Existing Infrastructure</b></p> <ul style="list-style-type: none"> <li>Waterdown Pump Station</li> <li>Finch Terminal</li> </ul> <p><b>Proposed Infrastructure</b></p> <ul style="list-style-type: none"> <li>Valve Site<sup>1</sup></li> <li>Pipeline Route</li> </ul> <p><b>Installation Method</b></p> <ul style="list-style-type: none"> <li>Bore</li> <li>HDD</li> </ul> <p><b>Municipal Boundary</b></p> <ul style="list-style-type: none"> <li>Conservation Authority Boundary</li> <li>Highway</li> <li>Road</li> <li>Built-up Area</li> </ul>	<p><b>Hydrology</b></p> <ul style="list-style-type: none"> <li>Watercourse</li> <li>Waterbody</li> <li>Provincially Significant Wetland</li> <li>Unevaluated Wetland</li> </ul> <p><b>Source Water Protection</b></p> <ul style="list-style-type: none"> <li>Significant Groundwater Recharge Area</li> <li>Highly Vulnerable Aquifer</li> </ul>	<p><b>Watercourse Crossing</b></p> <ul style="list-style-type: none"> <li>Class 1</li> <li>Class 2</li> <li>Class 3</li> <li>Class 4</li> <li>Study Area (1000m either side of centerline)</li> </ul>	<p><b>Sensitive Area</b></p> <ul style="list-style-type: none"> <li>Coopers Hawk Nest</li> <li>Snake Hibernacula</li> <li>ANSI, Earth and Life Science</li> <li>Groundwater Well (within 200m)</li> </ul>	<p><b>Greenbelt Designation</b></p> <ul style="list-style-type: none"> <li>Wooded Area</li> <li>Municipal Park</li> <li>Prime Agricultural Area</li> <li>Natural Heritage System Area</li> <li>Protected Countryside</li> <li>Niagara Escarpment Plan</li> </ul>	<p><sup>1</sup> Valve placement is subject to optimization.</p> <p>*Potential presence of SAR was determined based upon documented presence in watercourse or connectivity to watercourse with documented presence, and, upon habitat suitability at the crossing site. Note: documented presence data is for entire watercourse; specific locations of documented occurrences are unknown.</p>
---	--	--	---	---	--	---

## Waterdown to Finch Project

### Environmental Features Map

Southern Ontario  
Page 1 of 7





- Existing Infrastructure**
- Waterdown Pump Station
  - Finch Terminal
- Proposed Infrastructure**
- Valve Site<sup>1</sup>
  - Pipeline Route
- Installation Method**
- Bore
  - HDD
- Municipal Boundary**
- Conservation Authority Boundary
- Highway**
- Highway
  - Road
  - Built-up Area

- Hydrology**
- Watercourse
  - Waterbody
  - Provincially Significant Wetland
  - Unevaluated Wetland
- Source Water Protection**
- Highly Vulnerable Aquifer

- Watercourse Crossing**
- Class 1
  - Class 2
  - Class 3
  - Class 4
  - Aquatic SAR Potentially Present<sup>2</sup>
- Species**
- American Eel
  - Redside Dace
  - Silver Shiner

- Study Area (1000m either side of centerline)
- Provincially Rare Niagara Escarpment Cliff Habitat
- ANSI, Earth and Life Science
- Groundwater Well (within 200m)

- Greenbelt Designation**
- Wooded Area
  - Municipal Park
  - Prime Agricultural Area
  - Parkway Belt West Plan
  - Protected Countryside
  - Niagara Escarpment Plan

<sup>1</sup> Valve placement is subject to optimization.

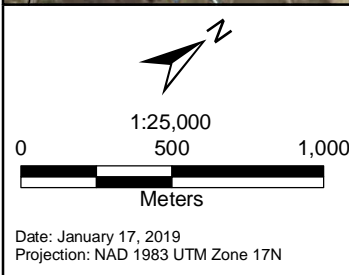
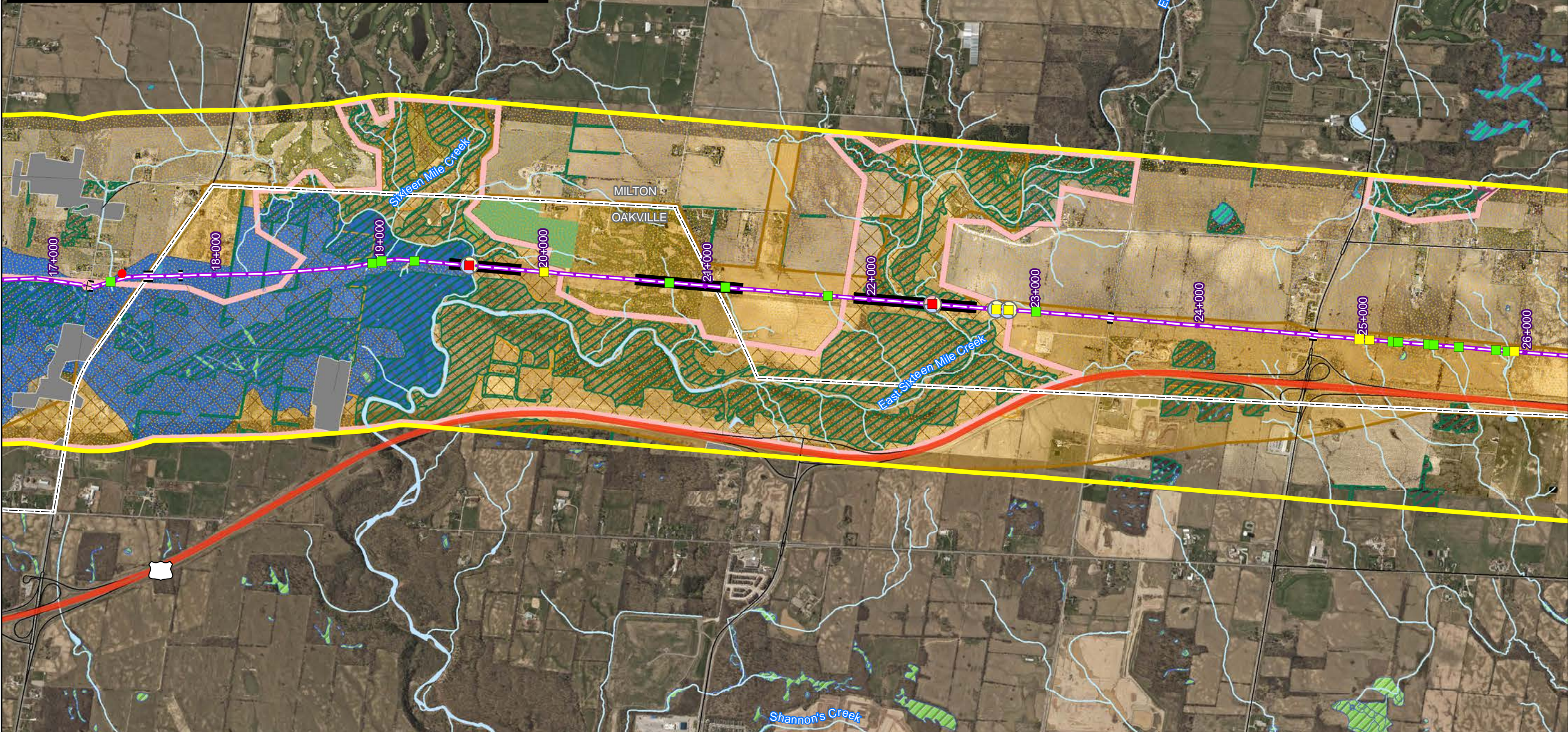
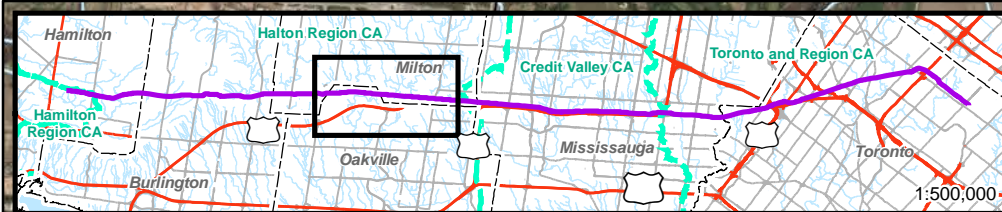
<sup>2</sup> Potential presence of SAR was determined based upon documented presence in watercourse or connectivity to watercourse with documented presence, and, upon habitat suitability at the crossing site. Note: documented presence data is for entire watercourse; specific locations of documented occurrences are unknown.

## Waterdown to Finch Project

### Environmental Features Map

Southern Ontario  
Page 2 of 7





<b>Existing Infrastructure</b> Waterdown Pump Station Finch Terminal	<b>Proposed Infrastructure</b> Valve Site <sup>1</sup> Pipeline Route	<b>Installation Method</b> Bore HDD	<b>Municipal Boundary</b> Municipal Boundary <b>Conservation Authority Boundary</b> Conservation Authority Boundary <b>Highway</b> Highway <b>Road</b> Road <b>Built-up Area</b> Built-up Area <b>Study Area</b> Study Area (1000m either side of centerline)	<b>Hydrology</b> Watercourse Waterbody Provincially Significant Wetland Unevaluated Wetland <b>Source Water Protection</b> Significant Groundwater Recharge Area	<b>Watercourse Crossing</b> Class 1 Class 2 Class 3 Class 4 Aquatic SAR Potentially Present <sup>2</sup> American Eel Redside Dace Silver Shiner	ANSI, Earth and Life Science Groundwater Well (within 200m) Wooded Area Municipal Park Prime Agricultural Area Parkway Belt West Plan Natural Heritage System Area <b>Greenbelt Designation</b> Protected Countryside
--	---	---	--	--	--	--

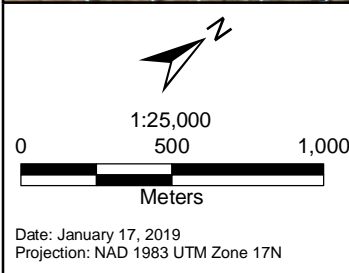
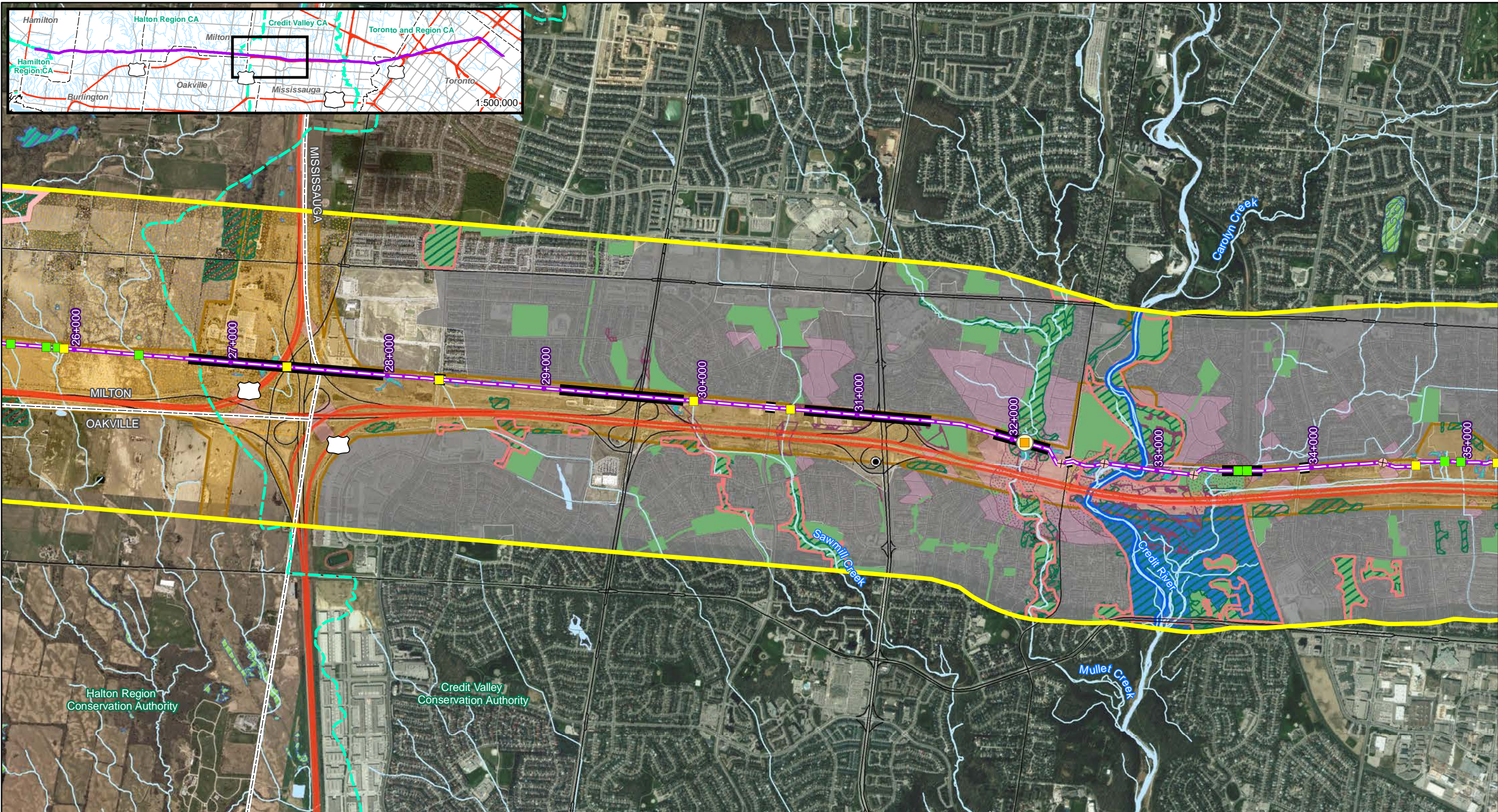
<sup>1</sup> Valve placement is subject to optimization.

<sup>2</sup> Potential presence of SAR was determined based upon documented presence in watercourse or connectivity to watercourse with documented presence, and, upon habitat suitability at the crossing site. Note: documented presence data is for entire watercourse; specific locations of documented occurrences are unknown.

## Waterdown to Finch Project Environmental Features Map

Southern Ontario  
Page 3 of 7





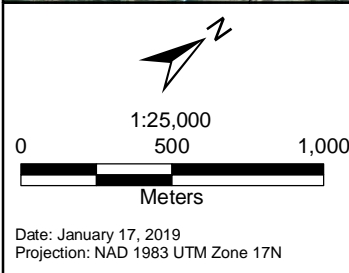
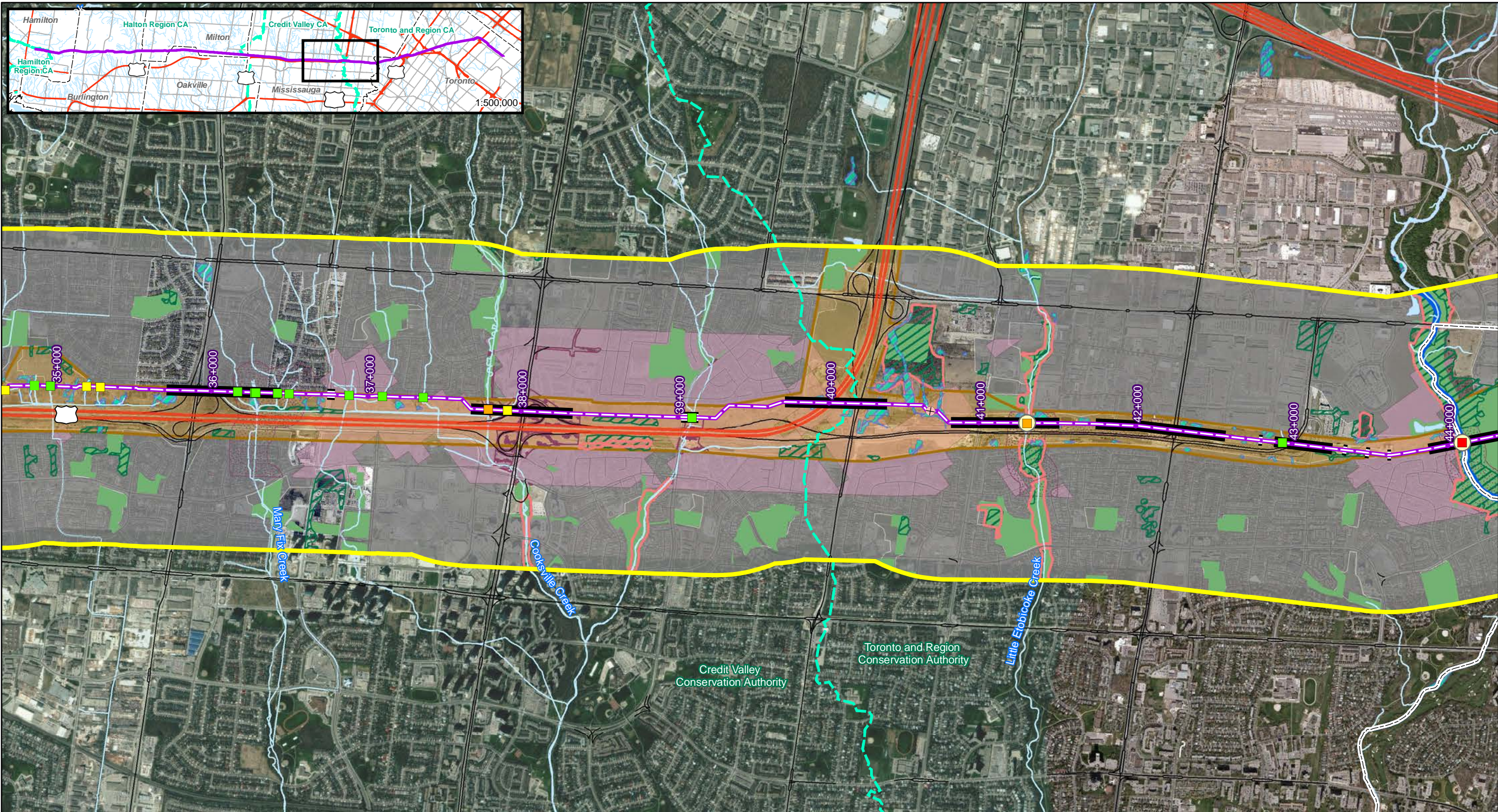
<p><b>Existing Infrastructure</b></p> <ul style="list-style-type: none"> <li>Waterdown Pump Station</li> <li>Finch Terminal</li> </ul> <p><b>Proposed Infrastructure</b></p> <ul style="list-style-type: none"> <li>Valve Site<sup>1</sup></li> <li>Pipeline Route</li> </ul> <p><b>Installation Method</b></p> <ul style="list-style-type: none"> <li>Bore</li> <li>HDD</li> </ul>	<p>Municipal Boundary</p> <p>Conservation Authority Boundary</p> <p>Highway</p> <p>Road</p> <p>Built-up Area</p> <p><b>Hydrology</b></p> <p>Watercourse</p> <p>Waterbody</p>	<p>Provincially Significant Wetland</p> <p>Unevaluated Wetland</p> <p><b>Source Water Protection</b></p> <p>Intake Protection Zone and Event Based Area</p> <p>Significant Groundwater Recharge Area</p> <p>Highly Vulnerable Aquifer</p>	<p><b>Watercourse Crossing</b></p> <ul style="list-style-type: none"> <li>Class 1</li> <li>Class 2</li> <li>Class 3</li> <li>Class 4</li> <li>Aquatic SAR Potentially Present<sup>2</sup></li> <li>American Eel</li> <li>Redside Dace</li> <li>Silver Shiner</li> </ul>	<p>Study Area (1000m either side of centerline)</p> <p>ANSI, Earth and Life Science Groundwater Well (within 200m)</p> <p>Petroleum Well</p> <p>Wooded Area</p> <p>Municipal Park</p> <p>Significant Natural Area</p> <p>Prime Agricultural Area</p>	<p>Parkway Belt West Plan</p> <p><b>Greenbelt Designation</b></p> <ul style="list-style-type: none"> <li>Protected Countryside</li> <li>River Valley Connection</li> </ul>	<p><sup>1</sup> Valve placement is subject to optimization.</p> <p><sup>2</sup> Potential presence of SAR was determined based upon documented presence in watercourse or connectivity to watercourse with documented presence, and, upon habitat suitability at the crossing site. Note: documented presence data is for entire watercourse; specific locations of documented occurrences are unknown.</p>
---	--	---	---	--	--	---

## Waterdown to Finch Project

### Environmental Features Map

Southern Ontario  
Page 4 of 7





<b>Existing Infrastructure</b>	Municipal Boundary
Waterdown Pump Station	Conservation Authority Boundary
Finch Terminal	Highway
<b>Proposed Infrastructure</b>	Road
Valve Site <sup>1</sup>	Built-up Area
Pipeline Route	
<b>Installation Method</b>	
Bore	
HDD	

<b>Hydrology</b>	<b>Source Water Protection</b>
Watercourse	Intake Protection Zone and Event Based Area
Waterbody	Provincially Significant Recharge Area
Wetland	Highly Vulnerable Aquifer
Unevaluated Wetland	

<b>Watercourse Crossing</b>
Class 1
Class 2
Class 3
Class 4
Aquatic SAR Potentially Present <sup>2</sup>
American Eel
Redside Dace
Silver Shiner

Study Area (1000m either side of centerline)
Groundwater Well (within 200m)
Wooded Area
Municipal Park
Significant Natural Area
Parkway Belt West Plan
River Valley Connection

<sup>1</sup> Valve placement is subject to optimization.

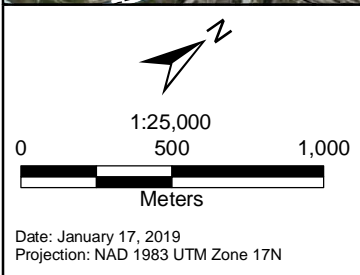
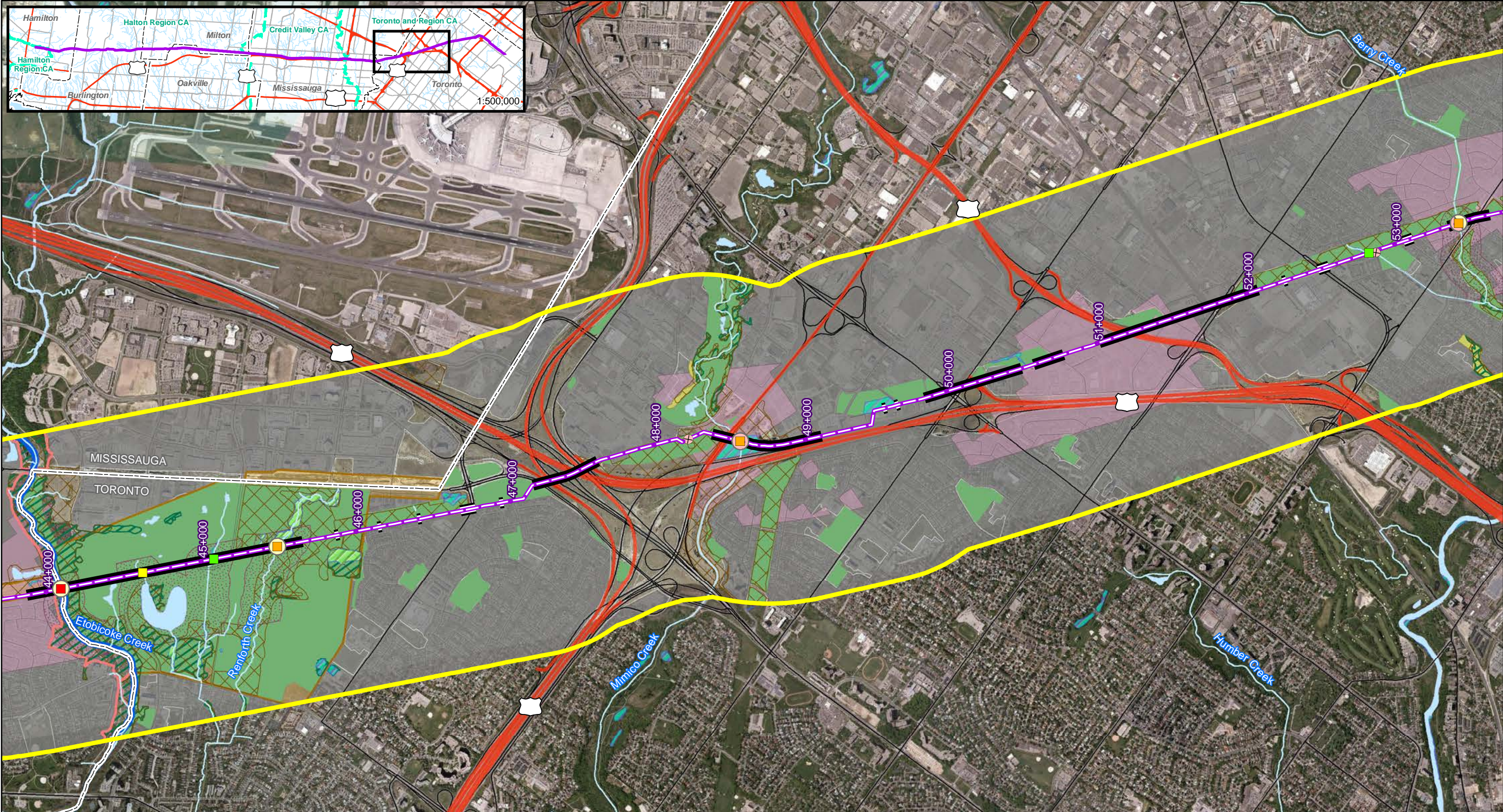
<sup>2</sup> Potential presence of SAR was determined based upon documented presence in watercourse or connectivity to watercourse with documented presence, and, upon habitat suitability at the crossing site. Note: documented presence data is for entire watercourse; specific locations of documented occurrences are unknown.

## Waterdown to Finch Project

### Environmental Features Map

Southern Ontario  
Page 5 of 7





- Existing Infrastructure**
- Waterdown Pump Station
  - Finch Terminal
- Proposed Infrastructure**
- Valve Site<sup>1</sup>
  - Pipeline Route
- Installation Method**
- Bore
  - HDD

- Municipal Boundary
- Conservation Authority Boundary
- Highway
- Road
- Built-up Area

- Hydrology**
- Watercourse
  - Waterbody
  - Provincially Significant Wetland
  - Unevaluated Wetland
- Source Water Protection**
- Intake Protection Zone and Event Based Area
  - Highly Vulnerable Aquifer

- Watercourse Crossing**
- Class 1
  - Class 2
  - Class 3
  - Class 4
  - Aquatic SAR Potentially Present<sup>2</sup>
  - American Eel
  - Redside Dace
  - Silver Shiner

- Study Area (1000m either side of centerline)
- Groundwater Well (within 200m)
- Wooded Area
- Municipal Park
- Significant Natural Area
- Natural Heritage System Area
- Parkway Belt West Plan
- River Valley Connection
- TRCA Property

<sup>1</sup> Valve placement is subject to optimization.

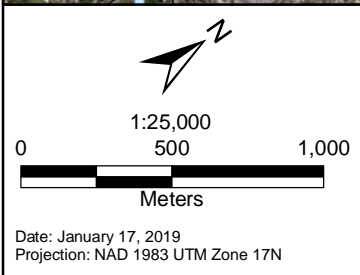
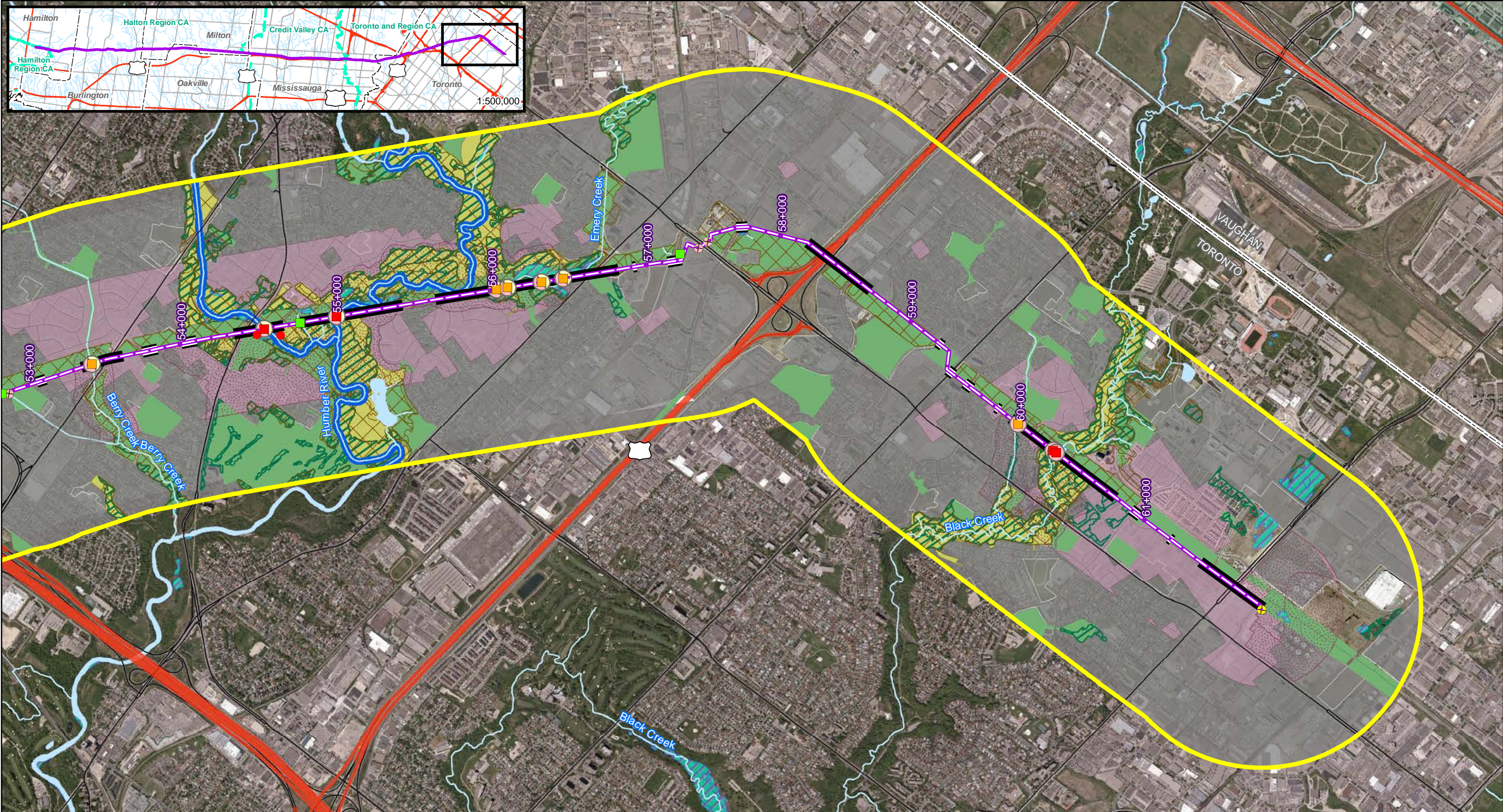
<sup>2</sup> Potential presence of SAR was determined based upon documented presence in watercourse or connectivity to watercourse with documented presence, and, upon habitat suitability at the crossing site. Note: documented presence data is for entire watercourse; specific locations of documented occurrences are unknown.

## Waterdown to Finch Project

### Environmental Features Map

Southern Ontario  
Page 6 of 7





<b>Existing Infrastructure</b>	<b>Municipal Boundary</b>
Waterdown Pump Station	Conservation Authority Boundary
Finch Terminal	Highway
<b>Proposed Infrastructure</b>	Road
Valve Site <sup>1</sup>	Built-up Area
Pipeline Route	
<b>Installation Method</b>	
Bore	
HDD	

<b>Hydrology</b>	<b>Watercourse Crossing</b>
Watercourse	Class 1
Waterbody	Class 2
Provincially Significant Wetland	Class 3
Unevaluated Wetland	Class 4
Source Water Protection	Aquatic SAR Potentially Present <sup>2</sup>
Intake Protection Zone and Event Based Area	American Eel
Highly Vulnerable Aquifer	Redside Dace
	Silver Shiner

Study Area (1000m either side of centerline)
Groundwater Well (within 200m)
Wooded Area
Municipal Park
Natural Heritage System Area
River Valley Connection
TRCA Property

<sup>1</sup> Valve placement is subject to optimization.

<sup>2</sup> Potential presence of SAR was determined based upon documented presence in watercourse or connectivity to watercourse with documented presence, and, upon habitat suitability at the crossing site. Note: documented presence data is for entire watercourse; specific locations of documented occurrences are unknown.

## Waterdown to Finch Project

### Environmental Features Map

Southern Ontario  
Page 7 of 7

